

CHILDREN'S AID  
AND FAMILY SERVICES

# BUILDING CONNECTIONS

## STRENGTHENING FAMILIES



## EMPOWERING INDIVIDUALS



2021 ANNUAL REPORT

# MESSAGE FROM THE BOARD CHAIR



**If the last two years have taught us anything, it's that connections are vitally important to our well-being.** We've learned firsthand what psychologists have long known: strong relationships with family and friends improve our emotional health and strengthen our resilience. For many of us, being able to gather together again has resulted in a deeper appreciation for one another and the precious moments that we spend together.

At Children's Aid and Family Services, forming bonds is essential to our work helping some of the most vulnerable members of the community. We are proud to have a talented and dedicated staff that works hard to build trusting relationships with our clients. Our goal has never wavered: help the people we serve to gain confidence and thrive.

Our therapeutic foster parents play a significant role in helping children and teenagers learn the importance of relationships, and in 2021, we recruited the highest number of caring parents ever in one year, who became licensed by the state and are a key part of delivering our mission.

The Center for Alcohol and Drug Resources deepened its commitment to substance misuse prevention for older adults and expanded its connection to this often overlooked population. It launched "Tablets for Seniors," which helps older people connect with loved ones to ease the loneliness of isolation and increase their access and ability to use technology. The Center also expanded its virtual programs geared to seniors to help them embrace healthy aging.

The agency opened two new community residences for individuals with intellectual and developmental disabilities. This is a wonderful benefit to our clients as these homes are spacious and conveniently located to our facilities as well as other resources and activities in the community.

Last year, Robert B. Jones, Ph.D., CEO Emeritus, returned to Children's Aid and Family Services to serve as Interim CEO. In total, he has served at the agency for more than 37 years. On behalf of the Board of Trustees, I thank Bob for his tremendous leadership and commitment to meeting the needs of vulnerable children, individuals and families. Dr. Jones is one of a kind — selfless, dedicated, wise, skilled as an administrator and peerless as a friend.

It is my great pleasure to announce that stepping in for Bob is Shavonda E. Sumter. She joined Children's Aid and Family Services as President and CEO in May 2022. Shavonda has more than 20 years of experience in the healthcare sector and, since 2012, has served as the representative of the 35th District in the New Jersey General Assembly. Shavonda is everything you want in a CEO: a born leader, charismatic, confident, empathetic and deeply skilled. I invite you to learn more about her goals for the agency in this year's annual report.

Thank you for all you do. Your connection to our mission continually propels us to build brighter futures for those we serve.

**C. Tyler Mathisen**  
Chair, Board of Trustees

“

*I was overwhelmed and anxious not knowing  
if I could support my baby as a single mom.  
This program saved my baby's life.*

Single mother's testimonial about  
our Baby Basics program

# OUR MISSION

*To strengthen families and empower individuals —  
children and adults alike — to reach their fullest potential.*



## WHAT WE DO

Founded in 1899 with a focus on child protection and adoption, Children's Aid and Family Services has placed more than 11,000 children with families. While helping children and families is still a core part of our mission, the agency has evolved and expanded to meet ever-changing social needs. In addition to adoption, our programs include:

- Community residences, specialized services and day programming for individuals with intellectual and developmental disabilities.
- Treatment Foster Care services provided by foster parents who receive specialized training to provide care in their homes to children and teens who have suffered from neglect, abuse, and trauma.
- Professional mentoring, educational support, and resources for young adults who "age out" of foster care at 18 years old.
- Free diapers, nutritional formula, and other baby essentials for low-income families.
- Community and school-based substance misuse prevention and education programs, and peer recovery support services.

# MESSAGE FROM THE CEO



**It is my honor to serve as the CEO of Children's Aid and Family Services**, an organization with a rich history of helping the most vulnerable in our community, and one with which I've long been familiar. Today is an exciting time to serve as a non-profit leader as we move into a new, post-pandemic world.

I'm fortunate to have joined a team of senior leaders who are selfless, dedicated heroes. They guided the agency through the many challenges presented during the past two years, and ensured we delivered our mission to as many people as possible during profoundly uncertain times. Some of the ways the agency adapted included using technology to stay connected to clients and team members; ensuring our direct support professionals and residents with intellectual and developmental disabilities were in safe and healthy

environments while also staying connected to the community; and creating strategies for team members to safely return to our offices in-person.

As I look ahead, we will focus on enhancing our systems of care through the implementation of innovative strategies that include technology improvements to create efficiencies in our service delivery. Another priority will be strengthening our partnerships with government, businesses, non-profit organizations and supporters to help maintain the agency's high quality of services, as well as incorporating training initiatives that focus on diversity, equity, and inclusion.

Despite the challenges the pandemic presented, the agency has experienced tremendous growth while continuing to provide exceptional care. This is due to our most valuable asset: our dedicated team of employees. Their training and retention are key to us providing these essential and high quality services.

Our programs and services have evolved throughout our history and remain as relevant today as ever. I thank all of you — our dedicated Board of Trustees, volunteers, staff and supporters — for your unwavering commitment to the mission of Children's Aid and Family Services.

I invite you to continue to be a part our wonderful community of supporters as we build on our rich legacy and continue to help vulnerable children, adults, and families to reach their fullest potential.

**Shavonda E. Sumter**  
President and CEO



**2 new community residences** were opened by our **Disability Support Services program**. Located in Wayne and West Orange, the homes are spacious and close to our facilities as well as other resources and activities in the community.

# WHAT WE ACCOMPLISHED

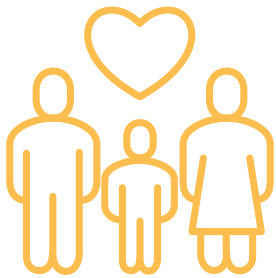
With the combined efforts of our Board of Trustees, supporters, volunteers and dedicated staff, we



The **Cope Institute for Professional Success** was launched in 2020 to **teach, coach, and educate** the agency's Direct Support Professionals and other Disability Support Professionals. The Cope Institute was featured by both CQL (The Council on Quality and Leadership) and NADSP (National Alliance for Direct Support Professionals) for its leading efforts in promoting professional development.



**85% of the children** placed into our **Therapeutic Treatment Homes** last year remain in their first placement and 85% show improved performance in school. Additionally, of those discharged, 70% were discharged to a less restrictive level of care, which included adoption and family reunification.



**98% success rate** for the 52 families served by our **WISE Families Program**, which diverts children from the juvenile justice system, works to prevent placement of children into foster or residential care, and promotes family wellbeing. WISE has helped 374 children and their families since its inception and is the only program of its kind in New Jersey.



**56 people** received support from our **Support Team for Addiction Recovery (STAR)** and **STAR expansion program**. The majority of STAR program participants are in stable housing, regularly attend recovery meetings, and are employed, volunteering or attending school.



**Construction was completed** on the second floor of **STRIVE day program** at 200 Robin Road, thanks to funding from the William Randolph Hearst Foundation and Bergen County. This renovation allows us to expand upon the programs we offer, such as community recreation and day habilitation. STRIVE day program emphasizes the socialization building skills needed for its members to seek employment.



**1,440 virtual classes** were conducted for members of **STRIVE day program** for individuals with intellectual and developmental disabilities.



# TOGETHER IN 2021

**helped over 15,000 vulnerable children, adults and families** in the community.

**1,397 clients** and **their families** were served by our **Recovery Specialists** last year.



**766 times** our **Recovery Specialists** responded when individuals overdosed from opioids.



**100% of young adults** participating in our **Mobility Mentoring program** live in safe housing, 88% are enrolled in school and/or working and 96% maintain their own bank accounts.



**350,000 diapers were distributed** through the **Baby Basics program** to low-income families in Bergen, Essex, and Passaic Counties, a 15% increase from 2020. There are no government safety net programs that address diaper need, which worsened during the pandemic. In 2021, the number of families served by the program increased by 40%.



**531 calls were received** at **The Center for Alcohol and Drug Resources'** 24-hour hotline for help with addiction, of which 370 people received Recovery Support services and 123 entered into a form of treatment.



# MEMORABLE MOMENTS



## Nearly 60 years of support

Since 1965, The Depot Gift Shop in Midland Park has been donating its proceeds to the agency while also supporting local crafters. Staffed by dedicated volunteers, The Depot has donated more than \$3 million to Children's Aid since its inception. Pictured are Joanne Mandry, co-director; Holly Maschio; Mae Mahonchak and Maureen Grassi, co-director, during a recent planning session.



## Supporting the community

The Center for Alcohol and Drug Resources' team spends a lot of time in the community, working with children and teens, families, adults and older adults to provide information, support and solutions about addiction and prevention. Pictured are team members attending "National Night Out," an annual community-building campaign that promotes police-community partnerships and neighborhood camaraderie.



## Grateful for our volunteers

Team members at Origami Risk spent a day sprucing up the yard at one of our community residences. Our volunteers help in so many ways, such as packaging diapers and baby supplies, running drives, making care packages, leading arts and crafts projects and helping at special events. A big thank you to all of these caring people who help us deliver our mission.



## Providing essentials in uncertain times

Supply chain issues and increasing material costs caused diaper shortages in 2021. Thanks to our generous supporters, we provided over 350,000 diapers to families in need. Pictured is Sam, a member of the STRIVE day program, helping us organize a delivery of diapers.



## A more inclusive agency

Children's Aid and Family Services launched Spaces for Hope, its diversity, equity, and inclusion employee-led council. Pictured is Jay Suggs leading the all-staff kickoff meeting.



## An Evening of Mystery and Magic

Children's Aid hosted An Evening of Mystery and Magic, our first in-person event since 2019. Everyone had a great time reconnecting with each other as they helped us to raise funds for the vulnerable children, adults and families we serve.

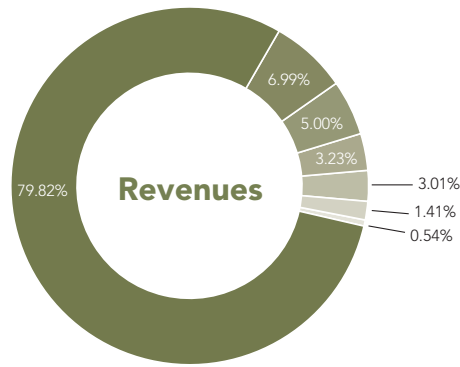


## Brightening the holidays

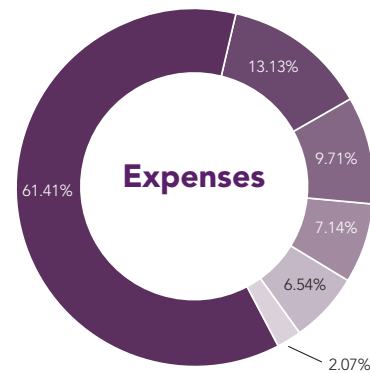
Thanks to our generous supporters, we are able to help make the holidays special for those we serve. This little girl's mother is a participant in our Mobility Mentoring program where she works with our professional mentor to set goals to help build economic independence. She and her daughter appreciated the kindness of our donors during the holidays.

# FINANCIAL REPORT

For the 12 months ended December 31, 2021.



Government	\$24,193,279
Forgiveness of PPP Loan	\$2,119,727
Annual and Endowment Gifts	\$1,515,178
Investment Income (including unrealized and realized gains on Investments)	\$979,269
Program Fees	\$912,057
Gifts in Kind	\$427,762
Miscellaneous Revenue	\$162,136
<b>Total Revenues</b>	<b>\$30,309,408</b>



Services for Developmentally Disabled	\$15,249,285
Support Services	\$3,260,041
Addition Prevention	\$2,410,890
Community and Clinical Service	\$1,774,057
Adoption and Foster Care Services	\$1,624,414
Fundraising	\$513,589
<b>Total Expenses</b>	<b>\$24,832,276</b>

## BOARD OF TRUSTEES

**C. Tyler Mathisen**  
Chair

**Jennifer A. Cope, MD**  
First Vice-Chair

Joseph Castelano  
Timothy G. Cope  
Mariann Crincoli

**Kathie Schwartz**  
Second Vice-Chair

**Joanne M. Westphal**  
Secretary

Stacey Hamilton Sandler  
Brian Healy  
Peter Jadrosich

Mary Krugman  
Dennis Martin  
Holly Maschio

**Robert E. Saydah, CPA**  
Treasurer

**Shavonda E. Sumter, MBA**  
President and CEO

Joan Stearns  
Jermaine "Jay" Suggs  
Karin Vanuga

## EXECUTIVE STAFF

**Shavonda E. Sumter, MBA**  
President and CEO

**Marie Reger, MBA**  
Chief Financial Officer

**Ellen Elias, MA, CPS**  
Senior Vice President, Prevention  
and Community Services

**Edith Fiato, MBA**  
Vice President of Development

**Melinda Iannarone Geraghty, MA**  
Vice President, Disability Support Services

**Jo Ponticello, LCSW**  
Vice President of Children's Services



CHILDREN'S AID  
AND FAMILY SERVICES

**Locations** Bogota, Clifton, Englewood, Fair Lawn, Garfield, Haskell, Hawthorne, Mahwah, Midland Park, Montvale, Paramus, Park Ridge, Ridgewood, Ringwood, South Orange, Wanaque, Wayne, West Milford, West Orange and Woodbridge

*Children's Aid and Family Services is a member of NADSP (National Association of Direct Support Professionals).*

200 Robin Road Paramus, NJ 07652 ■ [cfsnj.org](http://cfsnj.org)



# 2021 ANNUAL GIFTS

Children's Aid and Family Services would like to thank the following donors who gave from January 1 – December 31, 2021. We also gratefully acknowledge those donors that wish to remain anonymous. Thank you for being a part of our community of caring!

## \$5,000.00 +

Anonymous (2)  
Elaine Adler (22)  
The Bronfin Family (26)  
Buck, Seifert & Jost, Inc. (19)  
Charlotte Hansen Charitable Trust  
Church Alive  
Anne Goheen Crane and Thomas R. Crane, Jr. (28)  
DeLonghi America Inc.  
Friends of the Glen Rock Library  
KPMG LLP (15)  
Mary Krugman and Barry Poskanzer (17)

Gift of Life America Fund (16)  
Joanne Lamarca and Tyler Mathisen (23)  
Joanne Mandry and Donald Ramesdorfer (20)  
Jake Murasic  
Holly and Frank Maschio  
Mutual of America Foundation (22)  
National Mah Jongg League Foundation  
NBC Universal  
Novartis Pharmaceuticals Corporation (14)

Brigid and Kevin O'Brien (21)  
Otterstedt Insurance Agency  
The Pierson Family Foundation, Inc.  
Mary E. Racek  
The Ridge School (22)  
St. Elizabeth's Church (16)  
Joan E. Stearns (13)  
Stratton Charitable Foundation  
The TJX Foundation, Inc.  
UJA Federation of Northern NJ  
The Valley Hospital (19)

## \$2,500.00 +

Anonymous  
BASF Corporation (16)  
Bob's Discount Furniture Charitable Foundation  
Jennifer and Joseph Castelano  
East Orange Child Development Corp.  
Flames of Giving  
Brenda and Frank Gallagher (17)  
Sally Grapin and Peter Nurnberg  
Inserra Supermarkets, Inc.  
Heidi and E. Gerald Kay (26)  
Lamb Financial Group

## THE LEADERSHIP CIRCLE

The Leadership Circle is a group of donors that have made significant personal commitments to Children's Aid and Family Services and its mission to vulnerable children and families. Their exemplary annual gift commitment of \$10,000 or more is instrumental in providing the resources necessary to make the difference between programs of average quality and those that are truly outstanding. The Leadership Giving Circle was created to: recognize exceptional gifts; engage new leadership; and strengthen relationships and partnerships with our donors.

## \$250,000.00 +

The Copper Beech Foundation (25)

## \$100,000.00 +

The Price Family Foundation

## \$50,000.00 +

Dave Thomas Foundation for Adoption (16)  
The Hearst Foundation (17)

## \$20,000.00 +

Anonymous (1)  
Bombas  
The Children's Place  
The Conestoga Road Foundation  
Community Foundation of New Jersey (13)

The Edward W. & Stella C. Van Houten Memorial Fund (14)  
Greater Newark Holiday Fund (27)  
The Henry & Marilyn Taub Foundation  
Marion\* and Robert B. Jones (29)  
McInerney Jansen Family Foundation (15)  
Orange Orphan Society (26)  
Rodman Media Corp (13)  
Rosalie J. Coe Weir Foundation  
TD Charitable Foundation (15)  
Turrell Fund (18)  
Squadron Charitable Trust

## \$10,000.00 +

Anonymous (2)  
Elizabeth and James Cleary (21)  
Columbia Bank Foundation  
Jennifer and Timothy Cope  
The Depot (29)  
Tracey and David Gerber (12)  
Greater Bergen Realtors® Care Foundation  
Cecily and Brian Healy (16)  
Leanne and Stuart Hinchin (12)  
Nina and Ken Hovey (23)  
The Houston Family Foundation (17)  
The Hyde and Watson Foundation (13)  
Kathlyn and Peter Jadosich (24)  
The Lillian Schenck Foundation (19)

M & T Bank  
Marjorie Bunnell Charitable Fund  
Maureen and Dennis Martin  
Audrey I. Newman and John M. McKendry (27)  
Gertrude Noonan (24)  
Nordstrom, Inc. (12)  
Ridgewood Newcomers Club  
St. Joseph's Care Corner  
Sisters of St. Francis of Peace  
Kathleen and Wade Schwartz (13)  
TD Bank, N.A. (10)  
Valley National Bank  
Karin and Chris Vanuga  
West Side Nursery School

# 2021 ANNUAL GIFTS

CHILDREN'S AID AND FAMILY SERVICES

The Links, Incorporated  
Bergen County NJ Chapter  
Mary Beth Lyons\* (28)  
Maschio's Food Services, Inc.  
William McNamara (24)  
Carla and John Merlino  
New Bridge Medical Center (18)  
Nuance Communications (10)  
Anne and John Oros (21)  
Pequanock Township  
Senior Citizen Housing Corp.  
Pitching Monkeys Media Inc  
PNC Wealth Management  
Ridgewood High School  
CAFS Club  
Cheryl and David Sabath (19)  
St. George Orthodox Church  
St. John The Evangelist  
RC Church  
Gigo and Donald Taylor (17)  
Topcon Medical Systems  
Lisa and William Torpey (20)  
Women United in Philanthropy

## \$1,000.00 +

Anonymous (4)  
Sharon and Harry Baird  
Sara and Paul Beinstein  
Bergen County Prosecutor's  
Office PBA Local 221  
bergenPAC  
Bonnie and Brian Bibeau  
Myrna and Yale Block  
Bianca Bloucourt  
Barbara and Bruce Brady (24)  
Lolly Burgin (27)  
Sandy and Sue Cannold  
Care Academy ABA  
Center for Modern Dance  
Education  
Bruce Chamberlin  
Commerce and Industry  
Association  
Mary Lou and Robert Coviello (27)  
Catherine Crimmins (10)  
Bettina Daly and Donald  
Strangfeld  
Frank De Flora  
Delight and Paul Dodyk (24)  
Lisa M. Duff (16)  
Economic Mobility Pathways, Inc  
Caroline and Richard Ekman (24)  
Enterprise Holdings Foundation  
Edith and Tom Fiato  
First Presbyterian Church  
of Rutherford  
Jyoti and Rajinder Gandhi (24)

Steven L. Goldfarb  
Diego Gonzalez  
Maureen Grassi  
Greek Orthodox Ladies'  
Philoctocho Society of  
St. Nicholas  
Michael Halaby  
Tate Harris  
Laura Hasbrouck  
Susan and Michael Haviland (15)  
Phyllis E. Heilborn (25)  
Anne D. Herrmann  
Emily Howell  
Ellen and Michael Jacobs (18)  
Eneida Jimenez  
JJA Leasing, LLC  
Andrew Karas  
Phyllis and Daniel Kletter (24)  
Elizabeth and Thomas Lade (20)  
Laptop Upcycle  
Cathy and Robert Levine  
Lighthouse, Pregnancy  
Resource Center  
Mary Loreda  
Marlene Lyons  
Marie and Anthony Malloy (18)  
Managed Business Solutions  
Elizabeth and David Mason (20)  
Cathleen and Richard  
Matanle (13)  
Margaret and Edward  
McCormick (11)  
Jennifer McGee-Liggett and  
James Liggett  
Mogen Foundation, Inc.  
Lois Monahan (19)  
Alexandra and John Moody (18)  
John Morris  
The John and Diane Kim  
Foundation  
The Kaplen Foundation (11)  
Natural Products Group  
NBC Universal  
Eileen Negrycz (10)  
Nancy Noonan  
Kathleen and John O'Brien (26)  
One World Observatory  
Alice and Tom Palmer (17)  
Parlance Chamber Concerts, Inc.  
Poskanzer Skott Architects (14)  
PSE&G  
Linda and Theodore Quesada  
Riebesell Chiropractic (17)  
Erilyn and John Riley (19)  
Sarah Rothman  
Joanne and Denis Salamone (26)  
Judith and Robert Saydah (25)

Eric Schurenberg  
Suzanne Silverstein  
Snuggles for Children  
Steven M. Steiner (15)  
Barbara and Robert Stillwell (14)  
Jan and Jeffrey Strauss  
Sucherman Consulting Group  
Telcoworks  
Todd Ouida Children's  
Foundation (20)  
Jessica and David Trokel (12)  
Unitarian Society of  
Ridgewood (22)  
Mauro Visentini  
W.B. Mason  
Barbara and David Wasserman  
Margaret and Drew Watson (22)  
Wegmans Food Markets, Inc  
West Side Presbyterian  
Church (11)  
Sonia and Marcus Williams (10)  
Woodlea/Path I Advisory  
Council (20)  
Rose Zeltser (25)

## \$500.00 +

Anonymous  
Barbara Abney Bolger (29)  
Allendale Woman's Club  
Donna Antonini  
Kathy and Michael Azzara (24)  
Margot and Richard  
Badenhausen (16)  
John Bartley (10)  
Rosaline Berlin  
Sharon and Michael Bojck  
Boys & Girls Club of Garfield  
Christopher Buehler and  
Jill Hutchison  
Pat and William Byrne  
Charissa H. Yong Photography  
Krystal Choi  
Kevin Cirello  
Community Thrift Shop (16)  
Deanna D'Arrigo and  
Geoffrey Butler  
Cheryl and Jack Dean  
Jean DeCicco (14)  
Cheryl Druce  
Ellen Elias (16)  
Sarah Fentin  
Cynthia and Paul Feuss  
Julia Fiato  
Finding the Fabulous  
FIT4MOM BERGEN  
Paula Fitzgerald and  
Bruce Tripido

Ellen and Vincent Forlenza (20)  
Claudia and Jeffrey Frankel  
Patricia and Edward Gallagher  
Glen Rock High School  
Cheerleaders  
Maureen and John Hall  
Elizabeth R. Hershberger (20)  
Theresa and Thomas Hewitt  
Robert W. Honsinger (24)  
Sara Huisking  
Christopher Hurley  
ICS  
Juliska  
Katherine Kandravy and  
Andrew Kaider  
Donna Kennedy (17)  
MaryGrace and Errol Labosky  
Tony Lake  
Maribeth and Thomas Lane (26)  
Judith C. P. Lilley (20)  
Malesardi, Quackenbush, Swift  
& Co. (11)  
Andrew S. Meo (19)  
Michael Merritt  
MVMT Dance Center  
NJM Insurance Group  
Novartis Matching Gift Center  
Nunnbetter Dance Theatre  
Maureen and Donald Parenta  
Berdine and Charles Ponti  
Maribel and Perry Premdas (15)  
Michele and David Repetto (11)  
Rutgers Dept. of Athletics  
Sabrett Hot Dogs  
Stacey and Jack Sandler (10)  
Erin Schembari  
Kimberly Schottland  
Rebekah and Paul Simpson (14)  
Gail Smith  
Spavia  
Carole and Richard Strotbek  
Alina and Kurt Swanson  
Target Bergen Town Center  
Target Riverdale  
The Game Giver  
Total Wine & More  
Leonard and Laura Van Orden  
Jonelle and Ronald M.  
von Autenried (26)  
Maggie and Christian Wall  
Anita and Russ Warnet (21)  
John B. Wefing (23)  
Dustin Worthman  
Laura Wright  
Linda M. Zarnett (18)

# 2021 ANNUAL GIFTS

CHILDREN'S AID AND FAMILY SERVICES

## \$250.00 +

Anonymous (2)  
 Claire and Timothy Abel (13)  
 Accurate Proclean  
 Kathryn Adorney and  
 Neil Rindlaub (21)  
 Gayle and Jim Albes (18)  
 Krystyn and Tom Alessandrello  
 Patricia and Ricardo Almiron  
 Marianna Annunziata  
 Patricia and Harry Barile  
 Become Organized, INC  
 Kathleen and Noel Belli  
 Marjorie C. Berg (18)  
 Kathleen and David Braslow  
 Ellen Breger and  
 David Meinhard  
 Janet S. Brown (28)  
 Mary Jane and Luciano Bruni  
 Capital Genealogy  
 Mary P. Carter  
 Michelle and Scott Carter  
 Susan and Jonathan Cember  
 Leona Chamberlin  
 Christine and Richard Cundiff  
 Elianna and Aaron Czinn  
 The Depot Board  
 Christina Diomede  
 Stephanie A. Drag  
 Carol and Richard Edwards  
 Steven Elias  
 Frances Finkelstein  
 First Congregational Church  
 of River Edge (20)  
 Noreen Fluellen  
 Kelly and Rob Frank  
 Kimberley and Jim Freda  
 Heriberto Garcia  
 Susan Gjenvick and  
 Harold Simon (17)  
 Julie Grapin (14)  
 Cathrine and Robert Gritman (22)  
 Guardian Life Insurance  
 Sandra and James Healey (23)  
 Jeanne A. LaChapelle and  
 Joseph M. Healy  
 Megan Hely  
 Ho-Ho-Kus Fire Dept.  
 Ladies Auxiliary (10)  
 Melinda J. Iannarone  
 IHOP  
 It's That Time of the Month  
 Stephanie Louer and  
 Christopher G. Jones (10)  
 Peggy and Edwin Kabakow  
 Edward Kim

Carolyn Schwartz and  
 Larry Krawitz  
 Ajanta and Akshay Kumar (13)  
 Danielle Lagano  
 Brett Lauren Krugman  
 Shannon Lazare  
 Diane and William Liebman  
 Millie and Timothy Long (12)  
 Make Wine With Us  
 Megan Malloy  
 John Markel  
 Donna and Joe Maschio  
 Elizabeth and Brant Meleski (12)  
 Farryn and Gary Melton (19)  
 Microsoft  
 Marcus R. Miller  
 Theresa Moore  
 Elizabeth Murphy and  
 Richard Sparrow (17)  
 Nextwave Web, LLC (12)  
 OddJobBobNJ, LLC  
 Lyn Ofrane  
 Andrea and Herb Ouida (15)  
 Alyson Palmer  
 Inmo and Michael Parloff (14)  
 Mr. and Mrs. Joseph Perino  
 Cheryl W. Post  
 Richard Potter  
 Carol and Thomas Rakowski (13)  
 Julie and Carlo Rivera  
 Rivervale Country Club  
 Gladys and Fernando Ruiz  
 Sanzari's New Bridge Inn  
 Tori and Jason Sayanlar  
 Macrina Sheridan  
 Amanda Sheridan  
 Robyn Siedel  
 Sandra Snow (15)  
 Rita Sorbera  
 Spirit Cruises  
 St. Paul's Catholic Church (23)  
 Melanie Stern and David Rarich  
 Barbara and Mark Vermeylen (17)  
 Diane and Steven Wade  
 Joanne Westphal  
 Westwood United  
 Methodist Church  
 Dr. William M. Willis, Jr. (10)

## \$100.00 +

Anonymous (4)  
 Daryle Aguam  
 Marion and William Ahearn  
 Norris Allman (17)  
 Alstede Farms LLC  
 Amgen Foundation  
 Linda-Francine Anderson

Mary Ann and Albert Anderson  
 Pat and William Arnold  
 Nahum Bachrach (18)  
 Lynn and Christopher Ballerini  
 Susan and Joseph Barbuto  
 Cheryl Barrios  
 Suparna Basu  
 BD (28)  
 Behnke's Paramus Building  
 Supply Co. Inc.  
 Steven A. Belinsky & Family  
 Bergen Doula  
 Lori Brabant  
 Brown Brothers Harriman & Co.  
 Kathleen Brough and  
 David L Isralowitz  
 Justin Buergi  
 Paul D. Carter (14)  
 Ellen Caufield  
 Mickee and Art Caughlan (11)  
 Ellen Caulfield  
 Jane and Richard Certo  
 Katherine S. Chadwick  
 Sheryl and Howard Chesler (26)  
 Nancy and John Citti (17)  
 Joanne and Gary Cogswell (23)  
 Judy and Grenardo Comitto (12)  
 Sarah and Dennis Comstock  
 Meg Conaton  
 Jenifer Coombs  
 Creations by Fran Flowers  
 & More  
 Mariann Crincoli  
 Crystal Springs Resort  
 Kelly Darling  
 Mark Davis  
 Carolyn and Frank DeMaria  
 Carole DeRoberto (10)  
 Marianne and Robert Dill (12)  
 Mollie Dillion  
 Rachel and Ed Diomede  
 Melissa Dominguez  
 Chanel Dupree  
 Mr. Geoffrey Eberle  
 Marilyn Fagles (22)  
 Tina and Kevin Felix (18)  
 Nancy and William Ferer (18)  
 Maureen and John Ferralasco  
 Corey Ferrero  
 Christine Feorino and  
 Craig Berry  
 Richard S. Flint (25)  
 Four Seasons Early  
 Learning Center  
 Frink-Hamlett Legal Solutions  
 Gardiner & Co.  
 Susan and Saul Gardner

Jennifer Gardner  
 Diana and Anthony Gentile (18)  
 Maria and Richard Gilosa (10)  
 Giovanna's Cafe  
 Goldfish Swim School  
 Barbara and Dan Goodman (13)  
 Erica and Bill Goodman  
 Audrey and Gregory Goring (10)  
 Sheryl Grippio  
 Lisa and George Haase (15)  
 Carol and Howard Habler  
 Haggerty Dog Training  
 Cynthia and Rurik Halaby (13)  
 Kristin Halvey (17)  
 Charles L. Harp, Jr. (23)  
 Charmaine and Gene Hegybeli  
 Annemarie Hegybeli  
 Ashleigh Hempstead  
 Rita and Timothy Henkler (21)  
 Tiffany Herklots  
 Mary and Dennis Hiel  
 Judy and Paul Hildebrandt  
 Karen and James Hogan  
 Wanda and David Hollender  
 Danielle Hughes  
 Stephanie Ilenko  
 Lisa and Brian Jacoby  
 Eileen Jankunis (22)  
 Florence and Bob Jennes  
 Joi's Angels  
 Hannah Jones  
 Paula Kahwaty  
 Patricia and George Kehrberger  
 Betty and H. Ralph Kirby (23)  
 Elizabeth Kordonsky  
 Joan R. Lalonde (10)  
 Karen and Theodore Larson (11)  
 Carol Ann Lauro and  
 Daniel Mongiovi  
 Patricia and Frederick Ledlow (21)  
 James Leitch  
 Keith Lelia  
 Alice T. Leshar  
 Bobbi Lewis  
 Carol and Ernest Linnemann (15)  
 Joann and Stephan Loyka (10)  
 Jill and Elliot Lutzker  
 Nona and Thomas Maher (10)  
 Mahwah High School  
 Liz Maio  
 James Malloy  
 Mary Ellen Mandry  
 Sharon and David Manzo  
 Susan Marra  
 Kathy Marrazzo  
 Barbara and Arthur Masarky (22)  
 Jonathan Maschio

# 2021 ANNUAL GIFTS

CHILDREN'S AID AND FAMILY SERVICES

Patrice and William Mastropole Mathis House Monica and Edward McCabe (22) Erin McMahon and John Dewan (14) Jean McCormack Barbara G. McLaughlan (21) Patricia and Peter McMahon (13) Rachel Mcdrum Ryan McQuiggan Toni Ann and George Mehler (25) Ann and Carl Melone (19) The Melting Pot (11) Christopher Mika Sheerlee Mischel Cheryl Byk and Robert Montemurno (19) Montvale Health Sport + Spine Nancy and Norman Morley Martha and Edward Mulligan (16) Maria Munoz Sheila and Joseph Nadler (25) Yamini Naidu and Ravi Srinivasan Erin and Gene Napolitan (27) Thelma Nelson (18) Michael Nicholson Sandy Nobile Sara Noonan Tracey O'Brien Olive R Twist Oil Olive Company Patrick and Patricia Omalley Charles Omsberg (14) Mary Onie and Thomas Holland (20) Origami Risk LLC Judith and Charles Papier (23) Christine Petrino Phi Psi Lambda Leadership Inc. Joanne Ponticello Elizabeth Rebein Mr. Scott Reddin Barbara and Charles Reilly (20) Nancy and Gregory Ricca (11) Sheila and Robert Riccardi (12) Mary and Steven Riskind The River Palm Terrace (13) Jinny Rogers Karen Rosner Joan Ruley Sandra and Mort Sable (18) Saddle River Inn Brian Saglibene Michael Scala Jeremy Schaffer Grace and John Schaus (23)	Mary and Daniel Schouten Lois and Martin Sechehay(27) Joyce and Vincent Sharkey (21) Nina Sharma (14) Karen and Frank Sheehy Silk City Distillers, LLC Jessie Sklar Kathleen and Paul Smolen (21) Jonnie Sofer Sojo Spa Club Barna Solomon Leah Ann Spinelli Denton L. Stargel Alia and Isa Suqi (10) Nadine and J. Michael Sutcliffe (17) Victoria Sweeney Anne and Anthony Szabo Catherine and Joseph Taranto Teradata Dorothy and Walter Tobe Turtle Back Zoo Deirdre and Thomas Valente (22) Betsy and Joseph Vander Velde (16) Robyn and Jack Vanyperen (14) Genevieve Vaughn Marcia Victor (22) Carol and Frederick Villanova Meriam M. Voight (19) Denise and John Vollkommer (17) Linda Walker Diana and Bill Wall Mr. Michael G. Walters Barbara Wasserman and Andrew Mark Pearlstein Nicole Wendolowski Christopher Whiting Leslie Wilkins-Gaudio Jennifer Williams Barbara Winkler Mr. and Mrs. Michael Winograd The Woman's Club of Upper Saddle River Linda and Larry Zahn Cecilia and Alan Zalkind Robin and Greg Zorthian Sarah Zybert Jeanne Jaicks Wheaton (26)	Joseph Aloï Flor V. Alto ARAYA Rebirth (11) Donald Avena Cindy and Walter Badiukiewicz Steven Baggiero Philip Ball (14) Beth and Charles Barone Caroline and John Barr (16) Judith and James Barrett Carol and Richard Baum Barbara and Ernest Behrens (26) Jeanne M. Bensburg Bergen County Dental Hygienists Ryan Black Eric Blomstrom and Donna L. Laporta Maxine and Jack Bock Michael Bodner Julie Borst Susan G. Brooks (24) Milagros and Benjamin Cabuhat Marie Caliendo Campgaw Ski Deborah Capalbo Javier Castro Jumana Chalabi Anita Clemente Marisa Colandrea Mary Rose Collier Corinne Cornwallis Culinary Institute of America Maureen Cummings Karen Curlo Susan and Brian Curtiss (22) Ms. Mary Ann Cutrupi CVS John Davis Martin Dec Frances DeVita (11) Maureen and Mike Dotson Cynthia Duell Arlene and Steven Elias Cecile Felix Benedetta and Charles Fermier Fran Ferrara Elizabeth and Lawrence Forte (17) Nancy Franco Darlene Frankovic Ann Frommer Louise and Tony Furtaro Danielle and Enrico Gaglioti (12) Carol Gallagher Kimberly Garcia Marilyn and Robert Garten (15)	Jennifer Genosa The Giants Foundation Joann and Gerard Glauda Glen Rock Women in Community Service Shirley Gordon Suzanne and Paul Greene Anne Greene Catherine Greve Bikash Gupta Jeff Habley Phyllis Hall Sean Hanrahan Carole Hargrave Diane Harrigan Reyna Hernandez Pantaleon Lois D. Horowitz (17) Marylou Iacovo It's Greek To Me Lee and Walter Jenkins Rajender Jiwnani Elaine Kaiser Ellen Kelly (10) Judith Kelly Margaret and Thomas Kohli Kristen Konski Jessica Kurdali Mary Ann and Richard Kwiatkowski Leslie Labell Lucy Lachnicht Pamela Lakefield Barbara Anne Langan Amy and Carmine Langevin Natalie Lay Virginia and Thomas Leahy Susan and Frank Leier (21) Eleanor and Robert Leone (26) Karen Levine Phyllis and Robert Levine Little Nikki's Darlene Love Nancy Maciag Nicole and Anthony Magistro Marsha and James Magliacane Mae and John Mahonchak Cristina Maniu The Manley's Judith Manni Joyce Marchione Leah Margolin Rima Mason Sarah and Robert McClanahan (25) Keke and Marie McClendon Susan and Patricia McCue Kathryn and Derek McGrath (12)
--	--	--	---



# 2021 ANNUAL GIFTS

CHILDREN'S AID AND FAMILY SERVICES

Linda McLoof  
Tisha and John Mender  
Jean Miller  
Maureen and Geoff Millett  
Mali Mongil  
Francine and Mark Morden  
Elizabeth and Joseph Morley (18)  
Kathy and Ken Morris  
Maryjane and Martin  
Moynihan (16)  
Mr. Cupcakes  
Bernadette and Stefan Negrin  
Dorothy and Nicholas  
Nicoletti (16)  
Bonita Nora  
Cheryl O'Hara  
Dorothy and Richard Oswald (27)  
Kley Peralta  
Cindy and Jim Perrotta  
Perry's Florist & Gardens (12)  
Pinnacle West Capital  
Corporation  
Stephanie Pizzute  
Audrey Pollina  
Laura Ponsart  
Elizabeth and Frederick  
Pracht (26)  
Project Engage NJ  
PSEG (15)  
Joanne and Michael Reich  
Ms. Jacqueline E. Ross  
Anne Ryoo  
Roseann Saccoman  
Pasquina Sancilio

Elizabeth and George  
Schlowsky (16)  
Marilyn R. Schotz (13)  
Marieanne and Karl  
Schroeder (26)  
Elizabeth and Bart Sciaino (16)  
Linda and Frank Sepulveres  
Kathe Serbin  
Susan and Dan Serrao  
Shannon Rose (11)  
Trish Sheehan  
Shree Yoga  
Mark Siegler  
Donna L. Skurka  
Phyllis S. Sohn (27)  
Mr. and Mrs. John Stanton  
Caryn Starr-Gates  
Jane and Richard Steinkopf (24)  
Jennifer Stengel  
Jeannette Sterbinsky  
Jean Strickholm (21)  
The Stop & Shop  
Supermarket Company  
Pamela and George Swede (24)  
Barbara Szucs  
Anastasia Taranto  
Adrienne Tenbekjian  
Faith and Henry Thayer  
David Thompson  
Theresa and Gregory Trass  
Gale Troncillito  
Deborah and Andrew Tuorto  
Catherine Tutrone (21)

Irvin Vene  
The Village Grille  
Kimberly and Mike Visconti  
Andrea Visser (12)  
Joyce and Michael Wallstein  
Warby Parker  
Anne and John Warner (24)  
Vickey Waugh  
We Knead The Dough  
Jennifer and David Winning  
Patricia and Wayne Yankus (27)  
Carol and Robert Zurier

## IN HONOR OF

All of the victims of  
the Coronavirus  
Matthew Aschoff  
Russell Asnes  
Danny Bloch  
Shea Campbell  
Art Caughlan  
Dale Green  
William Houston  
Robert B. Jones  
Nancy Knox  
Edgar Koerner  
Anthony Malloy  
Joanne E. Mandry  
Tyler C. Mathisen  
Tisha Mender  
Dominick V. Meo  
Joanne Reich  
Sheila Riccardi

Elena Schaffzin  
Barbara C. Smith  
Mark C. Throdahl  
Women's Month

## IN MEMORY OF

Robert Aschoff  
Dr. Aaron Balasny  
Virginia C. Bryan  
Thomas R. S. Burgin  
George Campbell  
Loretta Campbell  
Patty Cursio  
Beverly Flint  
Philip Grappo  
Paul Gruber Sr.  
George Heilborn  
Jacob Hiel  
Harold Johnson Ward  
Marion Jones  
Arlene Joseph  
Anthony Kahwaty  
Mary Beth Lyons  
Scott Nelson  
Ryan Plateroti  
Bernadette Racek  
Owen Rice  
Fae Sadowsky  
Judy Schurenberg  
Rose Marie C. Schutt  
Dr. Earl Wheaton  
Jeannette Wiener  
Linda G. Yolman  
Ronald Zeltser

## SECOND CENTURY CIRCLE

Membership in the Second Century Circle is for all agency friends who have made  
a planned gift to benefit Children's Aid and Family Services in perpetuity.

Anonymous (5)  
Dr. Ozell K. Beatty  
Jean Bechtel\*  
Elizabeth W. Bell\*  
Barbara Abney Bolger  
Barbara G. and Bruce M. Brady  
Sarina Monast and  
Kenneth Bronfin  
Gilbert Brown\*  
Helen S. Cheel\*  
Anne Goheen Crane

Douglas H. Dittrick  
Geraldine V. Ely\*  
Phyllis Ettinger\*  
Filomena\* and Angelo P. \*  
Ferrara  
Ronald H. Grafe\*  
Mr. and Mrs. Frank Greek  
Julia G. Hoffman\*  
Nancy G. Honsinger  
Dr. Robert W. Honsinger  
Norma and Paul Hunter

Ellen and Michael Jacobs  
Marion\* and Robert B. Jones  
Janet and Frank\* Kireker  
Els\* and Gys B. Kooy  
Maribeth and Tom Lane  
Judi and Al\* Lilley  
Mary Beth Lyons\*  
Elizabeth and David Mason  
Audrey I. Newman  
Brigid and Kevin O'Brien  
Mr. and Mrs. Robert V. Reynen

Mr. and Mrs. Richard D. Schubert  
Jessie Sklar  
Marjorie and Robert G. Sommer  
Ethel G.\* and Arthur B.\* Toan  
Richard F. Townsend\*  
Ann and Henrik Tvedt, Jr.  
Jonelle and Ronald M.  
von Autenried  
Dr. William M. Willis, Jr.  
Wayne A. Yankus, M.D.

# 2021 ANNUAL GIFTS

CHILDREN'S AID AND FAMILY SERVICES



If you wish to make a bequest, please ask your attorney to consider the following suggested language:

*I give and bequeath to Children's Aid and Family Services, Inc., of Paramus, New Jersey \_\_\_\_ percent; or the sum of \_\_\_\_\_ from my estate; or all the rest, residue, or remainder of my estate.*

*This bequest is designed for the Endowment Fund, to be used by Children's Aid and Family Services wherever the need is greatest.*

## CELEBRATE A MOTHER

### IN HONOR OF

1463 Macopin Staff  
Gayle Albes  
Mary Albes  
Patricia Almiron  
Mary Ann Anderson  
Terry Aschoff  
Pat Baker  
Janice Balasny  
Lauren Barca  
Margie Basile  
Lisa Bertolini  
Bonnie Bibeau  
Bevin Bolger  
Megan Bolger  
Anny Boyle  
Barbara G. Brady  
L.T. Brady  
Kristin Braico  
Terry Capparelli  
Dayna Carley  
Sherrie Carr  
Jennifer Castelano  
Mary Cavanaugh  
Julia Chiang  
Lisa Christine  
Stephanie Clemens  
Marisa Colandrea  
Dawn Coleman  
Jill Connors  
Bonnie Cope  
Alison Coviello  
Darlene Coviello  
Mary Ellen Da Fronz  
Beverly Davenport  
Arielle De Delva  
Anna Digilio  
Linda Drag  
Anne Van Dyke  
Amy Elias  
Arlene Elias  
Ellen Elias

Maria Elias  
Edith Fiato  
Elizabeth A. Finnerty  
Betsy Gelotte  
Nan Grafton  
Ruthann Granito  
Julie Grapin  
Helen Grippio  
Sheryl Grippio  
Carol Habler  
Que Ham  
Lynne Hardy  
Lorraine Harvey  
Roberta Haselkorn  
Dorothy Hawley  
Becky Healy  
Sarah Healy  
Heather Iannone  
Donna Kennedy  
Mary Laice Healy  
Lynn LaMarca  
Elizabeth Landau  
Clonna A. Lane  
Charlene Little  
Rosa Littler  
Rhoda Lubetkin  
Linda Magnotta  
Gertie Malloy  
Kathy Marrazzo  
Barbara T. Masarky  
Patricia McCue  
Colleen McNerney  
Virginia McNerney  
Tisha Mender  
Diana Mercado  
Kathleen Molinaro  
Julia Mooney  
Cara Ann Negrycz  
Eileen Negrycz  
Christine Negrycz-Gerstein  
Ada Mae O'Connor  
Antoinette O'Connor

Andrea Ottaino  
Anna Ottaino  
Nancy Post  
Lovie Raines  
Elizabeth Rebein  
Annmarie Reid  
Sheila Riccardi  
Clara Rivera  
Cindi Rocca  
Karen Rosner  
Kristen Roth  
Dina Ruden  
Meghan Samarco  
Stephanie Scally  
Michelle Shoener  
Corinne Simon  
Rebekah Simpson  
Sheila Smith  
Jeannette Sterbinsky  
Alexa Strangfeld  
Nicole Stranix  
Judy Tavelli  
The Development Team  
at CAFS  
Angela Torres  
Treatment Homes Staff  
Anne Van Dyke  
Carol Vanuga  
Edith Villacampa  
Jonelle Von Autenried  
Diane Wade  
Maggie Wall  
Kate Ward  
Barbara Wasserman  
Kim Wheeler  
Michelle Wickwire  
Rose Zeltser

### IN MEMORY OF

Joan Baldasare  
Lauren Barra  
Helen Capalbo

MaryAnn Castelano  
Patricia Conaton  
Barbara A. Dennen  
Ann Drag  
Ana Felix  
Ruth Flora  
Joanne Gardner  
Rosemary Gaughan  
Jean Gehrett  
Pranati Guha  
Peggy Hill  
Claire A. Jones  
Marion Jones  
Elizabeth Lenihan  
Sophia Longovitou  
Sue Magnotta  
Gretta Marra  
Peggy Martin  
Mary Mathisen  
Michele McEvoy  
Helen McGowan Sharpe  
Ellie Mender  
Beulah Moody  
Doris Nicholson  
Sharon Nicholson  
Josephine Pacillo  
Alberta Poskanzer  
Helen Riccardi  
Mary Ellen Rowe  
Rose Marie C. Schutt  
Jackie Meyers Simms  
Audrey Stasion  
Jan Swinton  
Phyllis Toto  
Mildred Van Ness  
Alice Wallencollie  
Grace Westphal  
Sandy Williams  
Edyth Young  
Estelle Zwerling

\*Denotes Deceased

Please note: A number in parentheses following donor's name denotes those who have donated 10 or more years and are members of the President's Giving Circle. If your name is not listed or misspelled, we apologize for the oversight. Please contact our office at 201.261.2800 so we can correct the error. For a complete list of annual gifts, please visit [www.cafsnj.org](http://www.cafsnj.org).

200 ROBIN ROAD  
PARAMUS, NJ 07652  
CAFSENJ.ORG



CHILDREN'S AID  
AND FAMILY SERVICES