

Counseling Services for Children and Families

Positive Connections Family Counseling Services offers outpatient counseling services to children ages 3 – 21 and their families. We work together with children, teenagers and their families to provide them with the tools and support they need to live full and productive lives. We also work with parents to enhance their parenting skills, and offer them community resources to ensure that their children are receiving the necessary care and support to grow and develop.

Our clinicians also provide specialized counseling for adoptive and kinship families.* These families often face a unique variety of emotional challenges, including identity issues; loss and separation; curiosity about origins, and feelings of difference. Empowering families to work through and celebrate the feelings and changes that often accompany adoption or kinship is the goal of our counseling services for these families.

*Children's Aid and Family Services is an **Intensive In-Community Service** provider within the **State of New Jersey Department of Children and Families** and provides these services to adoptive and kinship families.



About Us

Founded in 1899, the mission of Children's Aid and Family Services is to strengthen families and empower individuals — children and adults alike — to reach their fullest potential. It is one of northern New Jersey's leading nonprofit providers of human services programs.

For more information about
Children's Aid and Family Services,
visit www.cafsnj.org.



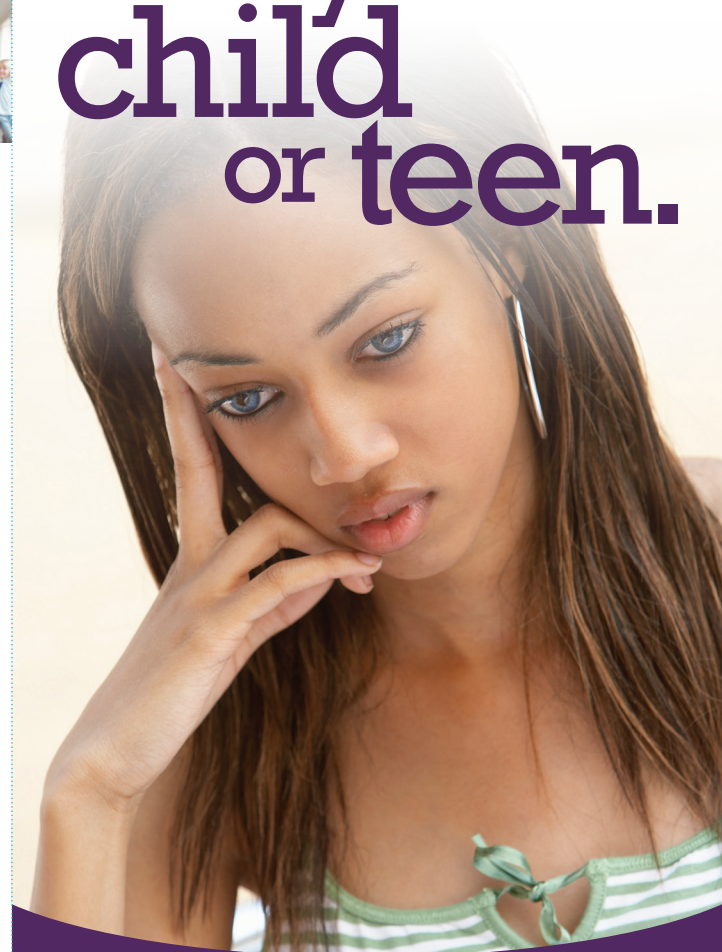
CHILDREN'S AID
AND FAMILY SERVICES

Building brighter futures since 1899.

22-08 ROUTE 208 • FAIR LAWN, NJ 07410

76 SOUTH ORANGE AVENUE, STE. 209 • SOUTH ORANGE, NJ 07079

Know when to get help for your child or teen.



POSITIVE CONNECTIONS
FAMILY COUNSELING SERVICES



CHILDREN'S AID AND FAMILY SERVICES

Signs your child may need support...



Notice the Signs

Emotional and mental health challenges in children and teenagers may be triggered by a variety of events, including the loss of a loved one during divorce, illness or death; adverse childhood or family events, trauma and school-related difficulties. We encourage families to seek help for their child if they observe any of these behaviors:

- Extreme anxiety (excessive worrying or fearfulness)
- Refusal to attend school or diminished performance in school
- Bullying issues (either being bullied or being accused of bullying others)
- Repetitive rituals, habits and behaviors
- Explosive anger or rage
- Challenges with focus; easily distracted

Our Services

Our team of experienced and compassionate professionals will provide your child and family with services designed to overcome a wide range of emotional, behavioral or relationship problems. We offer:

- Individual Child Therapy
- Family Therapy
- Parenting Support

Telehealth Counseling Now Available!

We are now accepting new clients for counselling services via phone or online.

Insurance

We accept private insurance and Medicaid.

Hours

By appointment only.

Monday – Thursday: 9:00 a.m. – 8:00 p.m.

Friday: 9:00 a.m. – 5:00 p.m.

Saturday: 9:00 a.m. – 2:00 p.m.

Call the Director of TSVP & Outpatient Services, at **201-740-7080** for more information.



For more information, call **201.740.7080**
or, visit www.cafsnj.org/family-counseling.